



JCB COMPACT EXCAVATOR RANGE

8008 CTS / 8018 CTS / 8025 ZTS / 8029 CTS / 8030 ZTS / 8035 ZTS /
8040 ZTS / 8045 ZTS / 8055 RTS / 8065 RTS / 8085 ZTS





**Everything you want
in a compact excavator**

RAISING THE STANDARD IN COMPACT EXCAVATORS



There are five key traits every customer looks for in a compact excavator: comfort, visibility, controllability, service access and versatility. JCB compact excavators excel in all of these areas. Ranging in size from less than 1 metric ton to over 8 metric tons, JCB has a compact excavator to fit your every need. The smallest-sized compact excavators include the 8008 CTS, small enough to fit through a doorway and the 8018 CTS that comes standard with two speed tracking for faster maneuvering around the job site.

The mid-sized compact excavators, ranging from 2.5 to 4.5 metric tons, offer true zero tailswing and recognize the need for more compact machines that still deliver power and productivity. The larger 8055 RTS and 8065 RTS offer superb performance in confined areas. The 8085 ZTS rounds out the range, offering the increased performance and comfort of a full-sized excavator, without losing the access advantage of a smaller machine.

11 models for any application

JCB compact excavators have been designed to provide the precise control, unrivalled service access, and comfortable operator environments that customers demand. It all adds up to a complete and comprehensive range of eleven compact excavators that customers around the world are finding indispensable across a multitude of applications and sites.

WHY BUY A JCB?

- 11 models ranging in weight from 2,095 lbs to 17,694 lbs
- Class-leading operator comfort reduces fatigue and increases productivity
- All around visibility allows for safer and more efficient operation
- Smooth and responsive hydraulics for precise operator control
- Open access to all service and maintenance points from ground level
- Multiple bucket and attachment options for increased versatility



8018 CTS

FEATURES

- 3,664 lb operating weight
- 8ft 1in maximum digging depth
- Top mounted boom prevents accidental damage
- Tilting cab and rear hood for exceptional service access



8008 CTS

FEATURES

- 2,095 lb operating weight
- 5ft 6in maximum digging depth
- Boom for better visibility and hose protection
- Able to enter doors and gates as narrow as 3ft



8025 ZTS

FEATURES

- 5,920 lb operating weight
- 9ft 4in digging depth
- Class-leading all around visibility
- Smallest-sized zero tail swing excavator in range

8029 ZTS



FEATURES

- 6,321 lb operating weight
- 10ft 0in digging depth
- New dozer design promotes spoil roll when grading
- Features O-ring face seals on hydraulic connections

8035 ZTS



FEATURES

- 8,049 lb operating weight
- 11ft 6in digging depth
- Class-leading digging performance
- Powerful lifting and digging performance

8030 ZTS



FEATURES

- 7,090 lb operating weight
- 10ft 3in digging depth
- Square footprint for increased turning ability
- Spacious operator compartment

8040 ZTS



FEATURES

- 9,480 lb operating weight
- 11ft 7in digging depth
- Color coded hoses for quick and easy replacement
- Load sensing hydraulics

8045 ZTS



FEATURES

- 10,470 lb operating weight
- 12ft 3in digging depth
- Available electronic proportional auxiliary controls
- Zero tail swing for greater accessibility

8065 RTS



FEATURES

- 14,515 lb operating weight
- 14ft 3in digging depth
- Reduced tail swing allows for access to confined areas
- Able to utilize popular 3CX and 4CX backhoe buckets

8055 RTS



FEATURES

- 11,660 lb operating weight
- 13ft 3in digging depth
- Auto idle decreases fuel consumption
- Class-leading serviceability

8085 ZTS



FEATURES

- 17,694 lb operating weight
- 14ft 3in digging depth
- Full-size excavator cab for class-leading operator comfort
- AMS System allows operator to choose 1 of 3 work modes



Class-leading operator comfort

FAST FACTS

- Standard suspension seat ensures the most comfortable working conditions (8030 ZTS and above)
- Isolated operator compartments result in reduced vibrations and in-cab noise
- Spacious operator area for class-leading operator comfort
- Highly efficient AC and heater options (8030 ZTS and larger)
- Track pedals fold out of the way to improve machine access
- Control pod isolates joystick servo controls and folds back for easier entry and exit
- Combined swing and auxiliary pedal for increased foot space



More comfort means more productivity

A more comfortable operator is a more productive operator. In a machine class notorious for cramped conditions, you'll find the JCB's operator environment a welcomed change. JCB compact excavator cabs and canopies are designed to maximize space and all day comfort, reduce operator fatigue and increase overall productivity.

From the 8008 CTS to the 8085 ZTS, all JCBs feature cab and canopy isolation mountings to reduce noise levels and minimize vibrations. This, in combination with an optional enclosed cab and heat and air conditioning options, provides a class-leading operator working environment.

All cabs also feature a gas assisted front screen that can be removed and stored overhead. On the 8055 RTS and larger compact excavators, you may also store the lower screen behind the upper screen before sliding and securing them both above the operator's head, further improving forward visibility.



The industry's largest operator area

Normally, cab size is one thing you'd expect to be compromised on zero and reduced tail swing machines. Not with JCB compact excavators. Getting into the JCB machine, the first thing that you will notice is a wide door that provides unrestricted entry. Entry is further improved by a left control pod that is hinged to lift out of the way of entry and exit providing uninhibited access.

Inside, what you will notice is just how big the cab is compared to other compact excavator models. The seating position is fully adjustable for maximum comfort. In addition, the control pods adjust independently of the seat, allowing the seat and pods to be set to the most comfortable position for you. The largest of the compact excavators, the 8085 ZTS features the biggest cab - the same cab that is used on JCB's full-sized excavator range.





Visibility like you've never seen

FAST FACTS

- Large glass area on all machines improves visibility
- Hose routings over the top of the boom on 8025 ZTS and larger, minimize total boom width for better down trench visibility
- Gull-wing hood design provides excellent visibility to the ground around the machine
- An unobstructed view of the right track increases productivity in confined areas
- Cab structure is designed to minimize obstructions, providing a panoramic view around the machine



Work faster and safer

All around visibility is a key factor in the overall productivity and safety of a compact excavator. JCB compact excavators feature exceptional visibility, allowing operators to confidently work in even the most confined spaces.

The glass area on all JCB compact excavators has been increased to further improve all around visibility. In addition, JCB compact excavators feature exceptional down trench visibility. On the 8025 ZTS and larger, the hoses are run over the boom, as opposed to down the side of the boom, further reducing visual obstructions by narrowing the total boom width.

Superior ground visibility

Whether you choose the cab or canopy option, you will find visibility from the operator's area is excellent. To the left, you can see the whole track. To the right and the rear, the curved gull-wing style hoods provide an unobstructed view of the right track and excellent all around visibility to the ground around the machine.

Whatever the task, exceptional visibility means the operator has a clear view of the job site, reducing chances of accidents and any damage to the machine and site structures. Add this to the enhanced comfort of JCB compact excavators, and you have the perfect solution to increase overall productivity and safety.





Effortless control

FAST FACTS

- Valve-block technology makes for smoother, more accurate operation
- Proportional auxiliary controls allow for precise attachment operation on foot pedal
- Swing and boom offset can be controlled simultaneously for faster machine positioning
- Load-sensing hydraulics improve performance and fuel efficiency (8040 ZTS and larger)
- Straight-line tracking lets you easily operate the excavator end while travelling for safe operation

Precision by hand and foot

If the view outside the cab is superb, the view inside is even better, with all the controls ergonomically placed to make controlling these machines nearly effortless. The entire range features short travel joysticks, the most advanced micro technology in the valve block and on the 8025 ZTS and larger, a variable flow hydraulic pump. These all provide the smooth, precise control required by the novice operator, without compromising on the power and speed demanded by the most experienced operators.

The 8025 ZTS and larger offer proportional auxiliary controls via the foot pedal. On the 8045 ZTS and larger, an optional electronic proportional auxiliary control is mounted on the joystick. These allow you to precisely control the oil flow from zero to full, so you can operate more attachments such as hydraulic thumbs and rotators.

We have simplified operation by combining the auxiliary and boom offset to one pedal. A changeover button on the joystick lets you change between the two functions. Now, with the foot pedal in the boom offset mode, you can operate the swing and boom at the same time, increasing productivity.

Maximum fuel efficiency

Starting with the 8040 ZTS, the larger JCB compact excavators come standard with the auto-idle feature. Auto-idle (which can be turned off if not required) helps you to conserve fuel by automatically switching to idle when the machine is stationary and then immediately returning to the setting you require as soon as you touch one of the controls.

The larger machines also feature a load-sensing, flow-on-demand hydraulic system. This system automatically controls flow and pressure, providing the hydraulic oil to a service only when you need to use it. This means the engine is never overworked (saving you fuel), won't stall and is always running at peak efficiency.

In addition, the 8085 ZTS has been redesigned to maximize fuel efficiency. The valve block has been relocated from the rear compartment to the side engine compartment. This has shortened hose runs and increased hydraulic efficiency. When combined with a powerful new engine, the redesign reduces fuel consumption by over 20%, saving an average of \$1,300 a year in fuel costs.





Easier access helps to maximize uptime

FAST FACTS

- 8018 CTS tilting cab provides class-leading service access
- Color coded hoses for easier replacement
- Quick release couplers on auxiliary pipework prevent oil leaks and contamination
- 2-speed track motors and hoses are completely enclosed within the undercarriage for excellent protection
- Grease-tensioning track adjustment for quick and easy maintenance
- Dual gull-wing hood design provides easy access to all service points at ground level
- 500-hour engine service intervals
- Removable floor plate for access to hydraulics



The access you demand

In direct response to customer requests, all JCB compact excavators now boast unrivalled access for easier servicing, along with increased service intervals to 500 hours.

On the 8018 CTS, the position of the engine has allowed the grouping of routine service checks within a remote service panel. For increased service access, JCB was the first manufacturer to introduce a tilting cab on this size of compact excavator. The whole cab effortlessly tilts from the rear on gas struts to provide unparalleled access to the engine and hydraulic components.

Just like the 8018 CTS, access to all service points is easy on the 8025 ZTS and larger. On these machines, dual gull-wing hoods provide class-leading service access to the engine compartment, control valves, hydraulics and diesel tanks. You can perform all daily checks from ground level and the hydraulic hoses on the entire range are color-coded to help identify the correct one when replacing.

On the 8025 ZTS, 8030 ZTS, and 8035 ZTS, the valve block is to the side which makes replacing hoses easier.



A removable plastic floor plate inside the cab provides access to the swing motor, rotary joint and hydraulic valves. On the 8040 ZTS and 8045 ZTS, the hoses meet under the cab at a central point that allows hoses to be changed without running the entire length of the machine.

On the 8055 RTS and 8065 RTS, both the side-mounted engines and rear-mounted valve blocks provide unparalleled access for carrying out daily checks and regular services, while grouped service points and ground level access make maintenance easier. On the 8085 ZTS the engine and hydraulic valve block are side mounted for better access and shorter hose runs. This allows the daily checkpoints to be grouped in the rear compartment and accessed from ground level.

A standard feature on the 8085 ZTS is the Advanced Management System (AMS). This in-cab technology provides an at-a-glance guide to operational status and history, displays machine alerts and can be used to download diagnostic and service information. The AMS can detect small issues before they become big problems, reducing service costs and downtime.





Proven versatility

FAST FACTS

- Class-leading hydraulic performance maximizes productivity
- Low center of gravity for increased stability
- Multiple track options for use in nearly any application
- X-frame designed undercarriage reduces material build up
- Standard Dual Pattern Control (DPC) changeover allows operators to choose the control pattern with which they are most comfortable



Tackle any application

JCB compact excavators feature powerful and efficient diesel engines. All power is transferred into class-leading digging and tracking performance via a smooth and effective hydraulic system, giving the operator impressive breakout forces and high tractive efforts.

Stability is the key to achieving high performance within this class of machines. JCB compact excavators are designed with a balanced weight distribution between the upper structure and undercarriage providing unmatched stability. The undercarriage dimensions are also optimized with a low center of gravity to increase digging and lifting performances both in line and over the sides of the tracks.

The heavy duty undercarriage provides a smooth ride and excellent tractive effort. For operating on a variety of surfaces, rubber tracks are provided as standard (steel tracks are available for applications where rubber tracks could be easily damaged).

On the 8055 RTS and larger, optional Bridgestone “Geogrip” tracks allow individual rubber track pads to be replaced as

opposed to replacing the entire track, effectively reducing operating costs over the life of the machine. In addition, the two-speed track motors provide power and high tracking speeds.

For dozing, you won't find a much more powerful compact excavator. Not only that, but the unique JCB dozer design also features a curved profile at the front which forms material into a roll that then keeps moving away from the machine rather than building up and acting as an obstacle.

The x-frame undercarriage, as well as being more rigid, is designed to help ensure material doesn't build up underneath the machine and impede performance.

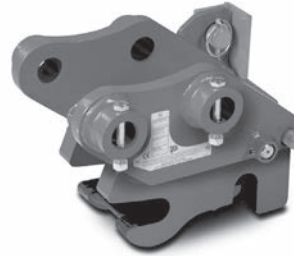
Finally, for ready-to-go versatility, JCB compact excavators feature hammer pipework to the arm as standard for powering attachments. Bi-directional pipework (e.g. for powering attachments such as augers) is also available as an option, allowing you to switch between hammer and bi-directional modes, further increasing productivity.





AUGERS

- High torque allows you to drill through the toughest ground conditions
- Standard flow and high flow options available
- Available bits ranging from 6in to 36in
- Replaceable wear parts system



QUICKHITCH

- Quicker changeover of attachments maintains high productivity
- Complete with safety pin for fail safe operation
- Compatible with a wide range of attachments
- Pin kits available



COMPACTOR

- Dipper mounted, protecting the operator from vibration
- Effective for trench reinstatement and general compaction duties
- Can be direct or quickhitch mounted
- Protection valve safeguards the unit from hydraulic pressure spikes



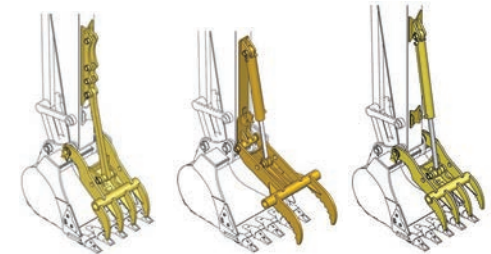
BUCKETS

- A complete range including off-pin and dedicated buckets
- General purpose buckets capacities range from .3 ft³ to 10 ft³
- Ditching/grading buckets capacities range from 2 ft³ to 7.7 ft³
- Replaceable wear parts system



HAMMERS

- Sealed for life accumulator for minimum maintenance
- Matched tool and piston assures optimum energy transfer, maximizing performance
- Silenced options available for use in urban areas
- Deliver up to 780 lbf of impact force



THUMBS

- Stiff arm, weld on hydraulic and main pin hydraulic thumbs
- Stiff arm - multi-position thumbs for optimum performance
- Weld on - heavy-duty hydraulic cylinder with threaded six bolt reinforcement
- Main pin - special finger serration for increased holding ability





1

CAB AND CONTROLS

- Large operator area for increased operator comfort
- Excellent 360 degree all-around visibility for increased safety and operator confidence
- Isolated cabs and canopies reduce vibration and noise providing a more comfortable operator experience
- Dual pattern controls allow machine to be operated in ISO or SAE control patterns
- Low effort controls reduce operator fatigue and increase overall productivity



4

BOOM, DIPPER, AND BUCKET

- Excellent digging performances across the range provide outstanding productivity
- Hoses routed neatly for improved visibility
- Boom reaches further back, increasing load-over height
- Impressive breakout forces to contend with the toughest digging conditions
- Available double acting pipework enhances versatility



2

SERVICE ACCESS

- Grouped access to routine checks and fills from ground level reduce daily maintenance time
- Gull-wing style hoods provide excellent service to engine and valve block (8025 ZTS and larger)
- IP69 electronics are fully dust and pressure washer proof, maximizing uptime
- Engine service intervals increased to 500 hours
- Color coded hoses for quicker serviceability



5

UNDERCARRIAGE

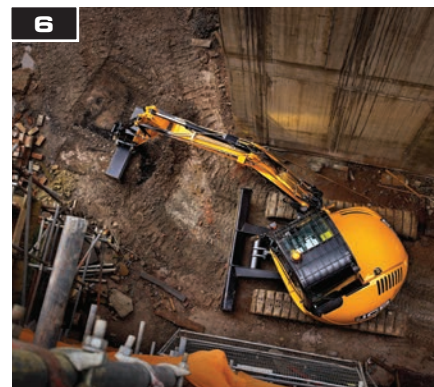
- Superb tractive effort for increased pushing power
- Sealed for life track rollers improve durability
- 2-speed tracking with auto kick down for quicker movement around the job site
- Unique dozer design increases productivity by rolling material
- Larger dozer support arms and torque tube for increased durability



3

ENGINE AND HYDRAULICS


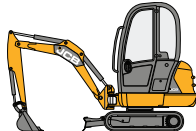

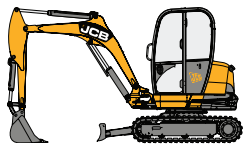

- Powerful engines for compact excavators
- All engines conform to interim Tier IV standard
- Impressive hydraulic pressures for optimum power and performance
- Load sensing hydraulics improve performance and fuel efficiency (8040 ZTS and larger)
- Optional electronic proportional auxiliary controls available for increased precision for operating attachments (8040 ZTS and larger)



6

PRODUCTIVITY

- Zero and reduced tail swing designs provide better access to confined areas
- Class-leading visibility reduces operator hesitation, increasing productivity
- Comfortable cab environments reduce fatigue and increase operator's ability to maintain a productive pace
- Electronic proportional auxiliary controls (8040 ZTS and larger) increase overall versatility
- Impressive digging forces and quick cycle times for high performance operation

MACHINE SPECIFICATION		8008 CTS	8018 CTS	8025 ZTS	8029 CTS	8030 ZTS
						
Operating Weight	lb (kg)	2095 (950)	3664 (1662)	5919 (2685)	6321 (2867)	7092 (3217)
Net Engine Power	hp (kW)	12 (9)	19 (14)	26.8 (20)	22.1 (16.5)	26.8 (20)
Emissions Certification		Interim Tier IV	Interim Tier IV	Interim Tier IV	Interim Tier IV	Interim Tier IV
Machine Width	ft-in (mm)	2-4 (700)	3-2 ½ (980)	4-11 (1502)	5-1 (1550)	5-5 (1652)
Ground Bearing Pressure	psi (Kg/cm ²)	3.3 (.23)	4.55 (.32)	4.5 (.31)	5.7 (0.40)	4.8 (.33)
Fuel Capacity	gal (l)	2.5 (11.5)	6.2 (23.5)	10.6 (40)	14.8 (56)	10.6 (40)

PERFORMANCE SPECIFICATION		8008 CTS	8018 CTS	8025 ZTS	8029 CTS	8030 ZTS
Dipper Length	ft-in (mm)	2-11 (887)	3-10 (1161)	3-7 ¼ (1100)	4-3¼ (1300)	4-3¼ (1300)
Max Dig Depth	ft-in (mm)	5-6 (1690)	8-1 (2470)	9-4 (2832)	10-0 (3050)	10-3 (3119)
Max Vertical Dig Depth	ft-in (mm)	4-10 (1480)	5-9 (1750)	5-1 (1542)	6-10 (2080)	5-8 ½ (1741)
Reach at Ground Level	ft-in (mm)	12-2 (3110)	12-8 (3865)	15-4 ½ (4691)	15-7¾ (4770)	16-1 (4901)
Dump Height	ft-in (mm)	6-6 (1980)	8-5 (2568)	10-4 ¼ (3158)	10-6¾ (3220)	10-6 (3205)
Bucket Rotation	(°)	191	198	189	189	186
Bucket Break Out	lbf (kN)	2091 (9.3)	3642 (16.2)	5395 (24)	5170 (23)	6295 (28)
Dipper Break Out	lbf (kN)	1034 (4.6)	2068 (9.1)	3372 (15)	3822 (17)	3822 (17)
Aux Pump Flow	gpm (lpm)	5 (18.9)	8.3 (31.4)	15.3 (57.9)	15.6 (49)	15.3 (57.9)

8035 ZTS	8040 ZTS	8045 ZTS	8055 RTS	8065 RTS	8085 ZTS
					
8049 (3650)	9480 (4301)	10472 (4750)	11660 (5289)	14515 (6584)	17694 (8026)
30.4 (22.7)	45 (33.6)	45 (33.6)	45.7 (34)	51.1 (38)	53 (39.5)
Interim Tier IV	Interim Tier IV	Interim Tier IV	Interim Tier IV	Interim Tier IV	Interim Tier IV
5-9 (1750)	6-6 (1980)	6-6 (1980)	6-7 (2000)	6-7 (2000)	7-7 (2300)
5.2 (.36)	4.12 (.29)	4.27 (.3)	4.7 (.33)	5.63 (.4)	5.67 (.4)
10.6 (40)	18 (68)	18 (68)	18 (68)	19.3 (73)	27.3 (103)

8035 ZTS	8040 ZTS	8045 ZTS	8055 RTS	8065 RTS	8085 ZTS
5-0 (1525)	5-0 (1525)	5-8 (1725)	6-3 (1900)	6-3 (1900)	6-7 (2000)
11-6 (3512)	11-7 (3525)	12-3 (3725)	13-3 (4038)	14-3 (4350)	14-3 (4350)
7-1¼ (2165)	7-3 (2230)	8-4 (2539)	8-11 (2705)	8-9 (2689)	8-9 (2667)
17-5 (5315)	18-5 (5613)	19-2 (5844)	19-6 (5933)	21-4 (6514)	22-1 (6729)
11-5 (3482)	12-7 (3843)	13-1 (3977)	13-6 (4106)	14-0 (4271)	15-0 (4580)
186	200	200	197	197	197
7193 (32)	8340 (37.1)	9487 (42)	9487 (42)	9240 (41.1)	11240 (50)
4496 (20)	5171 (23)	5868 (26.1)	6249 (27.8)	6677 (29.7)	8093 (36)
18.2 (68.9)	18.5 (70)	18.5 (70)	23.8 (90.1)	23.8 (90.1)	23.8 (90.1)

A few words about JCB



Sir Anthony Bamford, the son of Mr. JCB, still runs the company today.

A family company on a global scale

JCB is no ordinary company. From the dreams of one man, Joseph Cyril Bamford, we have grown into the world's largest privately owned construction equipment company by volume. Since 1945, the same attention to detail, passion for progress and family spirit has taken us from strength to strength. Nowadays, JCB operates across all five continents, manufacturing at 22 factories in the UK, Brazil, Germany, China, North America and India. With 1,500 dealerships and depots selling and supporting our products in over 150 countries, we are one of the top three manufacturers of construction equipment with some of the finest engineering facilities in the world.

A history of world-class innovation

Our business has always been driven by innovation, using only the most advanced technology, components and processes, meticulous design and rigorous testing. Evidence of this doesn't come much more powerful than our revolutionary JCB Dieselmix engine. Having grabbed the headlines when it smashed the world land speed record at 350.092 mph, it is now providing our customers with tomorrow's performance today.

Sustainability in all we do

As a manufacturer of working machinery, operating in both established and emerging markets, we accept the

challenge of helping to deliver economic and environmental sustainability. Product innovations that provide the right solutions to our customers have been a vital part of our history and will be key to our sustainable future. But in addition to developing cleaner and more efficient machines, we have a commitment to ensuring our manufacturing facilities meet the highest environmental standards.

A commitment to our customers that goes on

That's a fact we remind ourselves of constantly, and it's the reason our customers are at the heart of everything we do. Whatever a customer needs, we make it our mission to provide world-class support and 100% satisfaction. At the heart of this is a dedication to minimizing machine downtime. So our state-of-the-art World Parts Center dispatches more than a million genuine parts and attachments every week, with an 'Anywhere in 24 hours' strategy. Our JCB-trained technicians provide excellent, expert customer care, whether it's routine servicing or something more urgent.



Almost 1 out of every 2 backhoe loaders sold in the world is a JCB.

1940's



Joseph Cyril Bamford builds his first two-wheeled tipping trailer using a war-surplus Jeep axle and wheels in this rented garage in the United Kingdom.

1950's



JCB continues to expand its product line and moves its factory to larger quarters. By inventing the first backhoe loader, JCB revolutionizes the construction industry by giving contractors access to simple, powerful earthmovers.

1960's



JCB expands its factory, virtually doubling production capabilities. The company launches the forerunner of today's Jet Visit Program, acquiring an airplane and flying in customers for factory tours.

1970's



As demand for JCB products soars, the company exports its machines to Germany, Holland, Italy, Spain and Canada. JCB's Loadall Telescopic Handler revolutionizes the building industry by enabling bricks to be lifted on pallets.

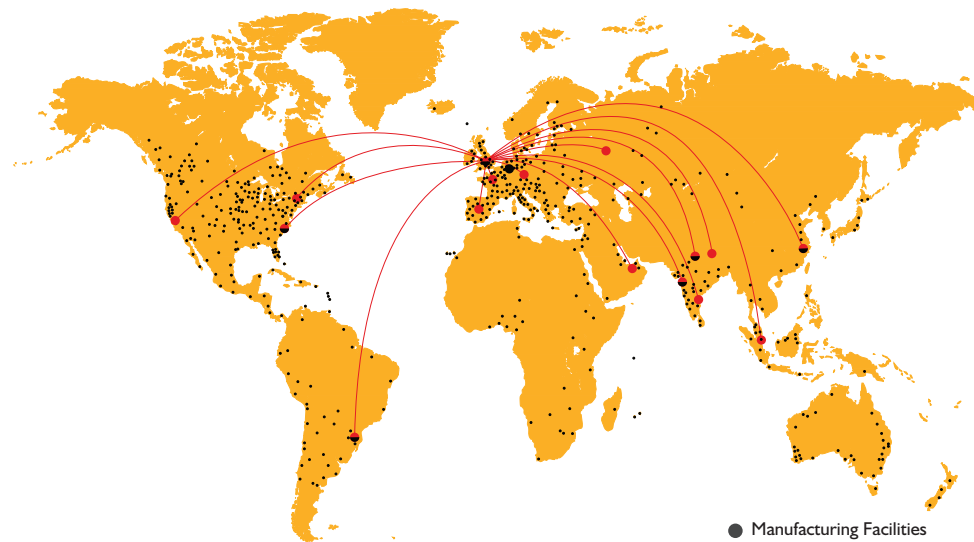


Built in 2000, the JCB North American Headquarters in Savannah, Georgia supports all United States and Canadian dealers and manufactures the world's safest skid steer and compact tracked loader.

JCB in North America

JCB has been in North America for over 40 years, but made a huge commitment to the market in 2000, when the North American business and manufacturing center was built in Savannah, Georgia. From this 500,000 square foot facility, JCB supports over 120 dealers in the United States and Canada, providing parts, training and expertise. The Savannah manufacturing floor produces the world's safest skid steer and compact tracked loader.

From Savannah, we are also proud to manufacture the High Mobility Engineer Excavator (HMEE), a high-speed fully armored backhoe loader currently in use by the U.S. Army.



- Manufacturing Facilities
- Parts Distribution Centers
- Dealers

To find out more about the full range of JCB construction equipment, and to find the dealer nearest you, please visit www.jcbna.com.



Built in Savannah, the fully armored JCB High Mobility Engineer Excavator (HMEE) is the world's toughest backhoe.

2 YEAR WARRANTY

Protection comes standard

- Industry best standard 2-year warranty
- Includes 3-year structural warranty
- Full JCB machine range covered
- First year warranty covers unlimited hours, second year covers up to 2000 hours

JCB is committed to the best aftersales support in the industry. The 2 year standard warranty can be serviced by any authorized JCB dealership and is transferable during the standard 2 year period.



1980's



JCB expands its product range to wheeled and tracked excavators. The company develops the first – and still the only – true, high-speed tractor, the Fastrac. JCB launches its telescopic handler in the U.S.

1990's



The revolutionary monoboom skid steer is introduced to the compact range of equipment, quickly heralded as the safest skid steer on the market because of its unique side-door entry.

2000's



JCB builds its North American headquarters near Savannah. The JCB Dieselmax engine breaks the land speed record. The company begins manufacturing its own diesel engines. The U.S. Army contracts 800 HMEES, to be built in Savannah.

Tomorrow

JCB's commitment to be 'Never Content' will remain. We will continue to develop innovative machines that will better help our customers get the job done. Our family of dealers will continue to grow, insuring you the world-class service and support no matter where you operate your JCB.



Connect with JCB

[f /JCB](#) [e /JCBNA](#) [YouTube /JCBNORTHAMERICA](#)

JCB Headquarters – Savannah, 2000 Bamford Blvd., Savannah, Georgia, 31322

Tel: (912) 447-2000 Web: www.jcbna.com

JCB reserves the right to change specifications without notice. Some machines shown within this brochure are fitted with optional equipment which may vary between dealerships.

